



5.11 Wild and Scenic River Impacts

5.11.1 Introduction

The rivers of the United States are a valuable resource, which provide a variety of scenic, recreational, geological, wildlife, historic, and cultural values. Many of these rivers are protected under federal and state laws. The National Wild and Scenic Rivers System, which includes the nation's premier rivers, and the Nationwide Rivers Inventory (NRI) both act to protect rivers at a national level. Lists such as the Indiana Department of Environmental Management (IDEM) Waters Designated for Special Protection and the Indiana Department of Natural Resources (INDR) Natural and Scenic River Segments act to protect Indiana's rivers at the state level.

The National Wild and Scenic Rivers System was created in 1968 by the Wild and Scenic Rivers Act. The Wild and Scenic Rivers Act states that it "be the policy of the United States that certain selected rivers of the Nation which, with their immediate environments, possess outstandingly remarkable scenic, recreational, geological, fish and wildlife, historic, cultural or other similar values, shall be preserved in free-flowing condition, and that they and their immediate environments shall be protected for the benefit and enjoyment of present and future generations." (16 USC 1271-1287). The National Wild and Scenic Rivers System list is maintained by the National Park Service (NPS).

In addition to the National Wild and Scenic Rivers System, the NPS has compiled and maintains the Nationwide Rivers Inventory (NRI). The NRI is a register of rivers that may be eligible for inclusion in the National Wild and Scenic Rivers System. The intent of the NRI is to provide information to assist in making balanced decisions regarding use of the nation's river resources.

Rivers and streams that are considered to have special importance and merit special State of Indiana protection must also be taken into consideration. These rivers are listed in either IDEM's Waters Designated for Special Protection or IDNR's Natural and Scenic River Segments.

5.11.2 Methodology

The National Park Service National Wild and Scenic Rivers System internet web site (<http://www.nps.gov/rivers/>) was reviewed to determine if National Wild and Scenic Rivers are present within proposed Section 2 I-69 Study Area.

The Geographic Information Systems (GIS) data layer, "Designated Rivers in Southwestern Indiana," was used to determine if any of the proposed alternatives cross rivers listed on the NRI, the IDEM Waters Designated for Special Protection, and/or the IDNR Natural and Scenic River Segments.



5.11.3 Analysis

There are no National Wild and Scenic Rivers System rivers located within the Section 2 corridor (nor in the entire state). The East Fork of the White River is listed on the NRI. The proposed Section 2 alternatives cross the East Fork where it forms the Daviess and Pike County boundary east of SR 57. See Figure 5.11-1 (pg. 5.11-181).

The location of the Section 2 crossing of the East Fork of the White River is included in a 55-mile-long segment of the river that is included on the NRI because of its scenic, recreational, geologic, fish, and historic values. An early coordination letter was sent to the National Park Service (NPS) (Midwest Regional Office) on January 26, 2007. On February 6, 2007, the NPS offered several recommendations for use in the design process. The e-mail response letter sent by the NPS is provided in Appendix B.

5.11.4 Mitigation

Four recommendations made by the NPS in their email dated February 6, 2007 include: (1) “To protect natural free-flow and other hydraulic functions, avoid placement of piers in the bed or banks of the river (fully span the river).” --Given the size of the East Fork of the White River, there will likely be one pier located within the water body. Specific details will be established in final design. (2), “Redirect deck run off away from the river to settling ponds or other filtration system (avoid use of scuppers that drain run off directly to the river).”--Redirection of deck run off away from the river is planned for the project. As of yet, it has not been determined what type of filtration system will be used. (3), “Ensure commitments are in place to fully incorporate opportunities for design aesthetics (style/size of piers and other substructure components; texture/color of deck, rails, girders, and abutments).”--Opportunities to implement aesthetically pleasing components will be available during final design. and (4) “Ensure all best management practices are in place to contain erosion, sedimentation, fuels/hydraulic fluids/oils spills, or other such materials.”—Prior to construction, a detailed erosion control plan will be completed to address Rule 5 permit conditions. This plan will be implemented and followed as way of controlling erosion and potential contamination during construction.

5.11.5 Summary

The proposed Section 2 alternatives cross the NRI-listed East Fork of the White River at the Daviess-Pike County line. Several bridge design recommendations made by the National Park Service on February 6, 2007 will be further addressed and implemented where feasible during the design process.

No National Wild and Scenic Rivers, IDEM Waters Designated for Special Protection, or IDNR Natural and Scenic River Segments are crossed by this project.

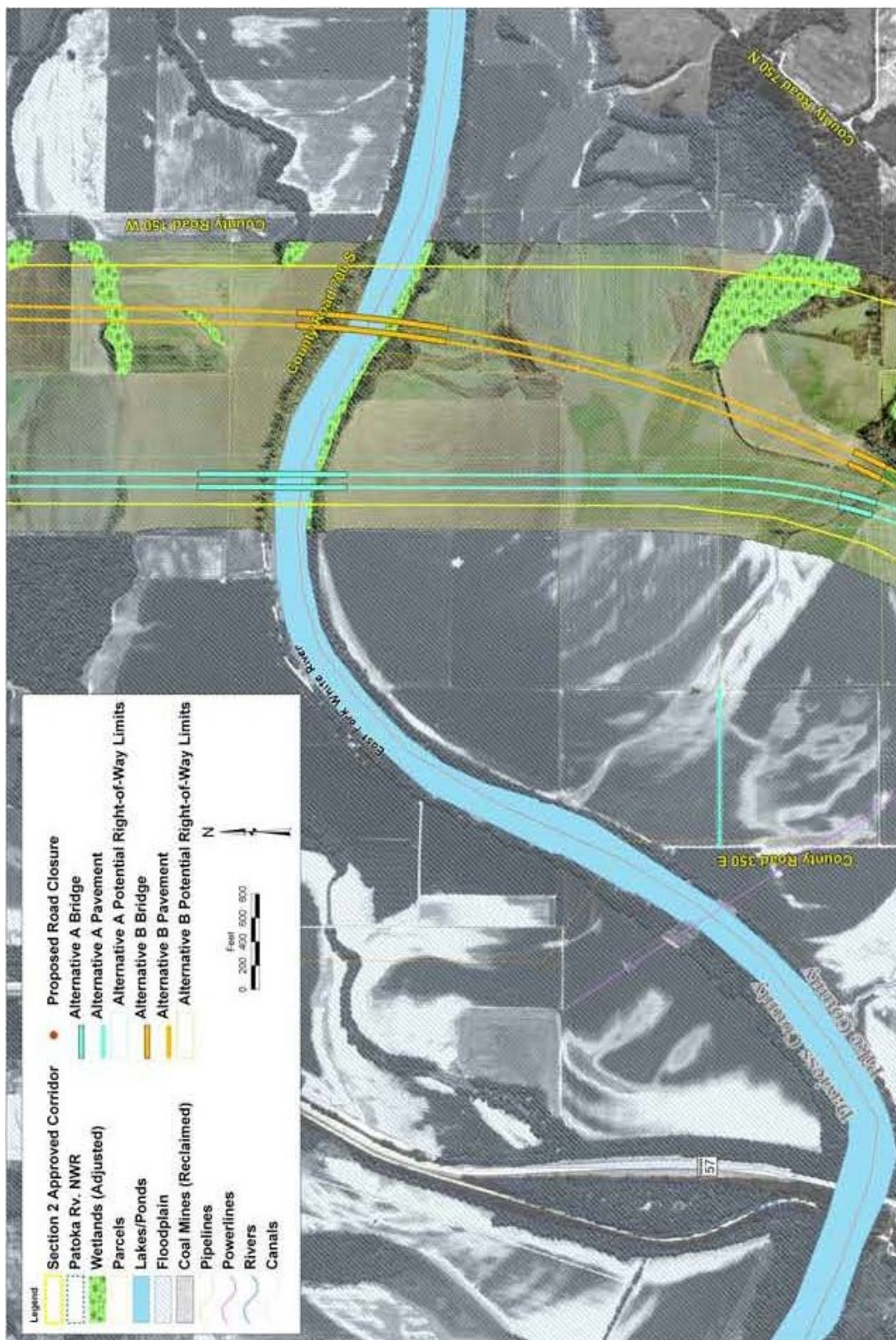


Figure 5.11-1: East Fork of the White River



BLANK PAGE